



# Our Lean Journey ...so far

Speaker: Kaisa-Liisa Raiskinmäki, architect

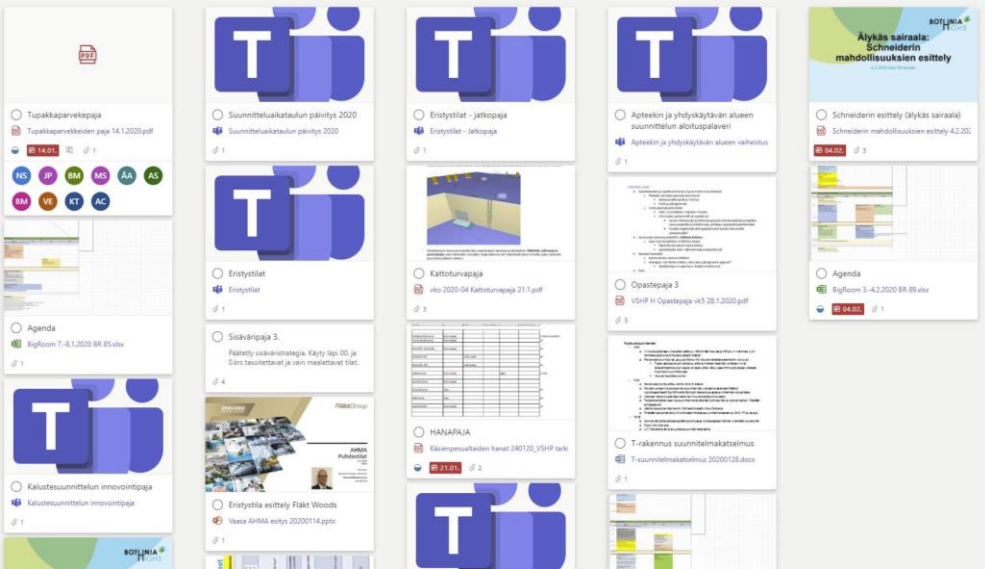
Company: Raami Architects

- based in Tampere
- 30 designers
- hospitals, kindergartens, housing

RAAMI



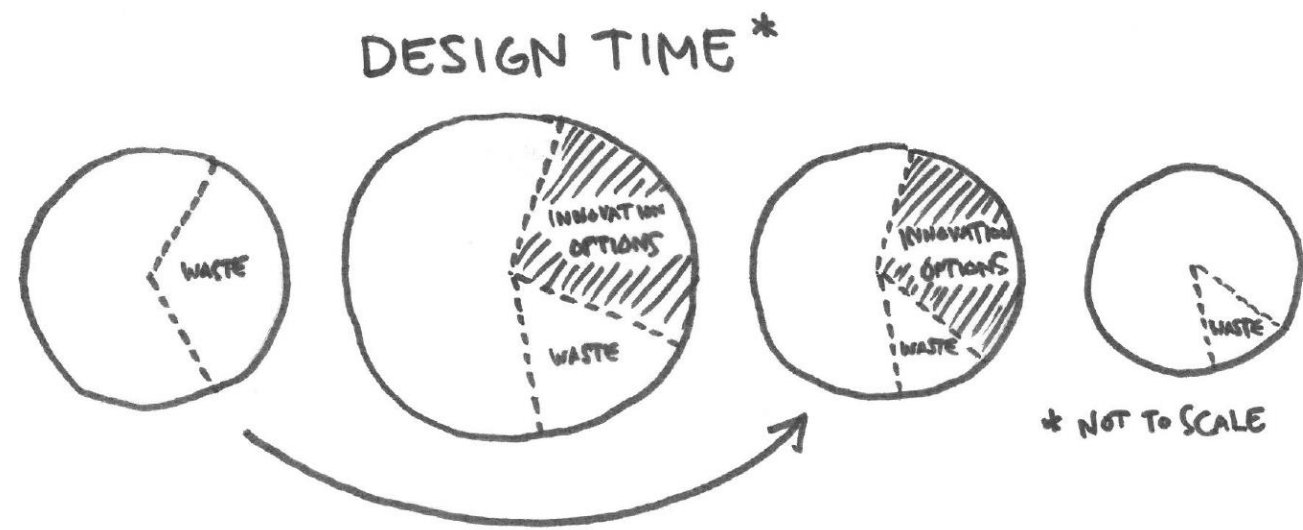
LEAN CONSTRUCTION  
INSTITUTE - FI



## Lessons from Alliance projects and Lean

- started in 2017 with our first alliance projects
- methods only in use in alliance projects
  - LastPlanner, takt planning in design
- methods being employed in all of our projects
  - Target Value Design principles, eliminating waste in our design process e.g. by developing BIM
- most important thing!
  - continuous improvement, reflecting on what went well and what didn't – Lean mindset



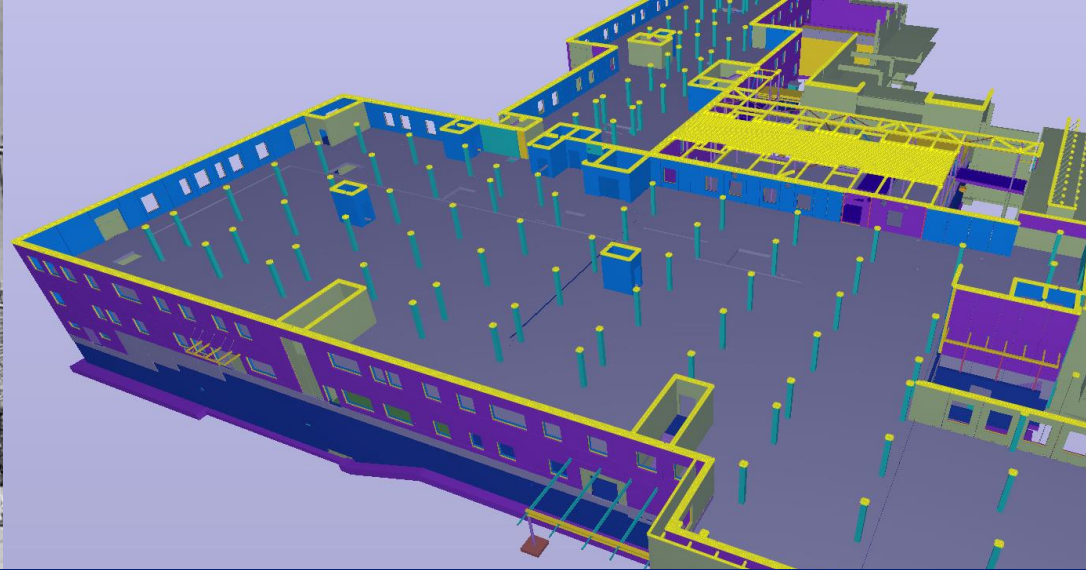
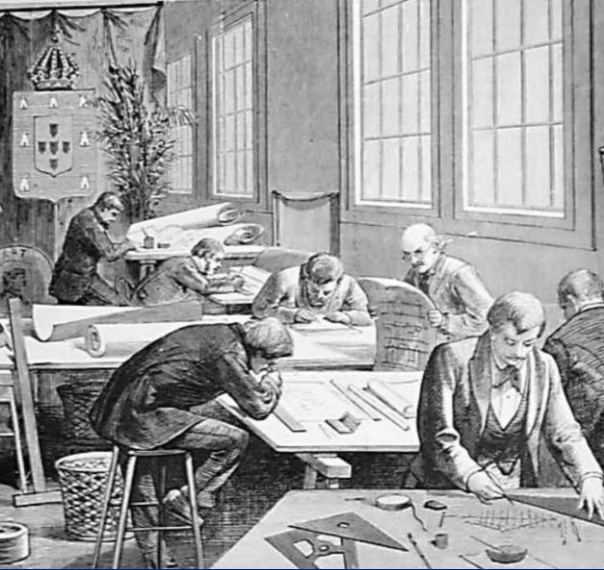


## Two main takeaways of Lean for us as designers

### 1. more value, less waste

- producing options and other material for decision making → more time
- creating space for innovation → more time
- developing our design process and team work → less time
- more value to all parties





A.1.001	TK	57,0 m²	32 m	LP6	JL4	SP1		K1	
A.1.002	PORRAS	20,0 m²	20 m	LP13	JL3	SP1+SP10		K3	
A.1.003	HISSI 49	5,0 m²	9 m	(none)	(none)	SP4		(none)	
A.1.004	HISSI 47	8,0 m²	11 m	(none)	(none)	SP4		(none)	
A.1.005	HISSI 48	8,0 m²	11 m	(none)	(none)	SP4		(none)	
A.1.006	HISSI APT	1,0 m²	4 m	(none)	(none)	SP4		(none)	
A.1.007	AULA	388,0 m²	133 m	LP6	JL4	SP1+SP11+SP6		K1	Taideseinän koko n.20m² / veastos n. 20m²
A.1.007	APUV. PARKKI	10,0 m²	15 m	LP6	JL4	SP1		K1	
A.1.008	INVA-WC	6,0 m²	10 m	LP7	JL2	SP2+SP13		K1	
A.1.009	WC ETUTILA	28,5 m²	39 m	LP7	JL2	SP2+SP10+SP13		K1	Peteäänjärjestelmä, äänitaideteos, mosaiikki
A.1.009	WC	1,5 m²	5 m	LP7	JL2	SP2+SP13		K1	
A.1.010	APTEEKKI	89,0 m²	53 m	LP10	JL3	SP1+SP10		K1	
A.1.010	APT, TAKATILA	30,0 m²	25 m	LP10	JL3	SP1+SP11		K1	
A.1.010	TSTO APT	10,5 m²	15 m	LP10	JL3	SP1+SP11		K1	
A.1.011	ATK	5,5 m²	10 m	LP17	JL5	SP3		K5	
A.1.012	Sähkö	5,5 m²	10 m	LP18	JL5	SP3		K5	
A.1.013	TURVA	22,0 m²	19 m	LP1	JL3	SP1+SP10+SP11		K1	
A.1.014	INFO	14,0 m²	15 m	LP10	JL3	SP1+SP10		K1	
A.1.015	TAUK	13,5 m²	16 m	LP1	JL3	SP1+SP12+SP16		K1	Printin koko n.10m²
A.1.016	VAR TURVA	13,5 m²	15 m	LP1	JL3	SP1		K1	
A.1.017	OTTO-PISTE	6,0 m²	10 m	LP1	JL3	SP3		K1	
A.1.018	SELUNHOIT.	16,0 m²	16 m	LP10	JL3	SP1+SP11+SP18		K1	Taideseinän koko n.12m²
A.1.019	SELUNHOIT.	26,0 m²	21 m	LP10	JL3	SP1+SP11+SP18		K1	Taideseinän koko n.12m²
A.1.020	OMAIS. H	20,0 m²	20 m	LP10	JL3	SP1+SP11+SP18		K1	Taideseinän koko n.12m²
A.1.021	SIV	14,0 m²	17 m	LP5	JL2	SP2		K1	
A.1.022	MU	1,0 m²	5 m	(none)	(none)	(none)		(none)	
A.1.023	KÄYTÄVÄ	57,0 m²	44 m	LP2	JL3	SP1+SP17		K1	
A.1.024	KÄYTÄVÄ	39,0 m²	33 m	LP2	JL3	SP1+SP17		K1	
A.1.025	PAARI P.	9,0 m²	16 m	LP2	JL3	SP1+SP17		K1	
A.1.025	KÄYTÄVÄ	87,0 m²	68 m	LP6	JL4	SP1+SP17		K1	
A.1.026	KÄYTÄVÄ	48,5 m²	42 m	LP2	JL3	SP1+SP17		K1	

## Two main takeaways of Lean for us as designers

### 2. rethink the whole thing!

- no finished blueprints by a deadline
- push planning → pull planning
- importing and exporting data from the BIM model to advance the project
- desinging the fixed parts first

